



# Beach Lace

A Collection of Photo Paintings by Don Berg

## Beach Lace

# Photo Paintings by Don Berg

Thank you very much for purchasing this collection of digital paintings. I created them from photos that I took of a pretty cluster of wild Queen Anne's Lace that was growing at the edge of a little beach in Southern Vermont. You're welcome to print as many different images as you'd like, and as often as you like, to use as decorations for the walls of your home or office.

## About Me

I'm a grandpa, dad and husband who likes to dabble with paintings and photographs to create stuff to hang on walls and to help decorate rooms. I've worked with real paint, on canvas and paper, and with film photography since the 1960s. But, I've turned my darkroom into a storage closet and decided to leave my paint tubes and brushes in there while I try to create digital photos and pixel paintings that I hope you'll enjoy.

A long, long time ago, I studied architecture and photography at Rhode Island School of Design, and received degrees in fine arts and architecture. As an architect, I've designed more than a hundred homes and accessory buildings throughout the US and Canada and worked at preserving dozens of historic buildings. I've been a guest and consultant on HGTV and published fifteen books on traditional American building and landscape design. My designs, articles and interviews have appeared in Home Magazine, Country Life, The Old-House Journal, Better Homes and Gardens, Grit, Yankee Magazine, Mother Earth News, Period Home Magazine, Traditional Building and many other publications and web sites.

I live with my wife and best friend Christine, on Long Island, New York, where we're lucky enough to be near our kids and grandchildren.

## How to Print Your Images

All of the photo paintings in this collection are designed to print on standard, letter-size, 8.5 by 11 inch paper and to fit into standard 11 by 14 inch mats, with 7.5 by 9.5 inch openings, for framing. You can print them on your home or office printer or copy them to a disk or thumb drive for printing at a print shop or office supply store.

You'll get the best quality prints if you use top quality, heavy weight, soft gloss photo paper or inkjet canvas. You can find both online or at art and office supply stores.

All printers are different, so I can't be of much help with yours. Just make sure that you have fresh ink and that you set your controls for the best quality photo prints. You may have to experiment a bit if your printer has settings for color intensity and contrast. You may also have to set your printer for "borderless" photos to allow it to print full-size images.

Don't waste your paper. Make sure to print only the images that you want by selecting their page numbers for your printer.

## Color Palettes

If you're planning a decorating or craft project and want to use some of the colors from the images in this collection, you're in luck. At the end of this file, I've included links to two free paint color chip palettes that were generated by Sherwin Williams' amazing Chip It! program at LetsChipIt.com. You'll be able to use those color scheme or find more colors that complement these prints.

Please don't put too much trust in the colors that you see online or in this collection. Computer monitors never display colors completely accurately. Get actual color chips from a Sherwin Williams store or from a paint shop that can match them. Then, view them in diffuse sunlight or in the light of the room where you want to use them before you order your paint.

## Your Guarantee

If, for any reason, you're not happy with your purchase of this collection, just email me at [djberg@aol.com](mailto:djberg@aol.com) and I'll send you a complete refund. On the other hand, if you do like this collection or any of the images, please email me to let me know. I'd also love to know your ideas and suggestions for future prints.

[www.TodaysArts.net](http://www.TodaysArts.net)

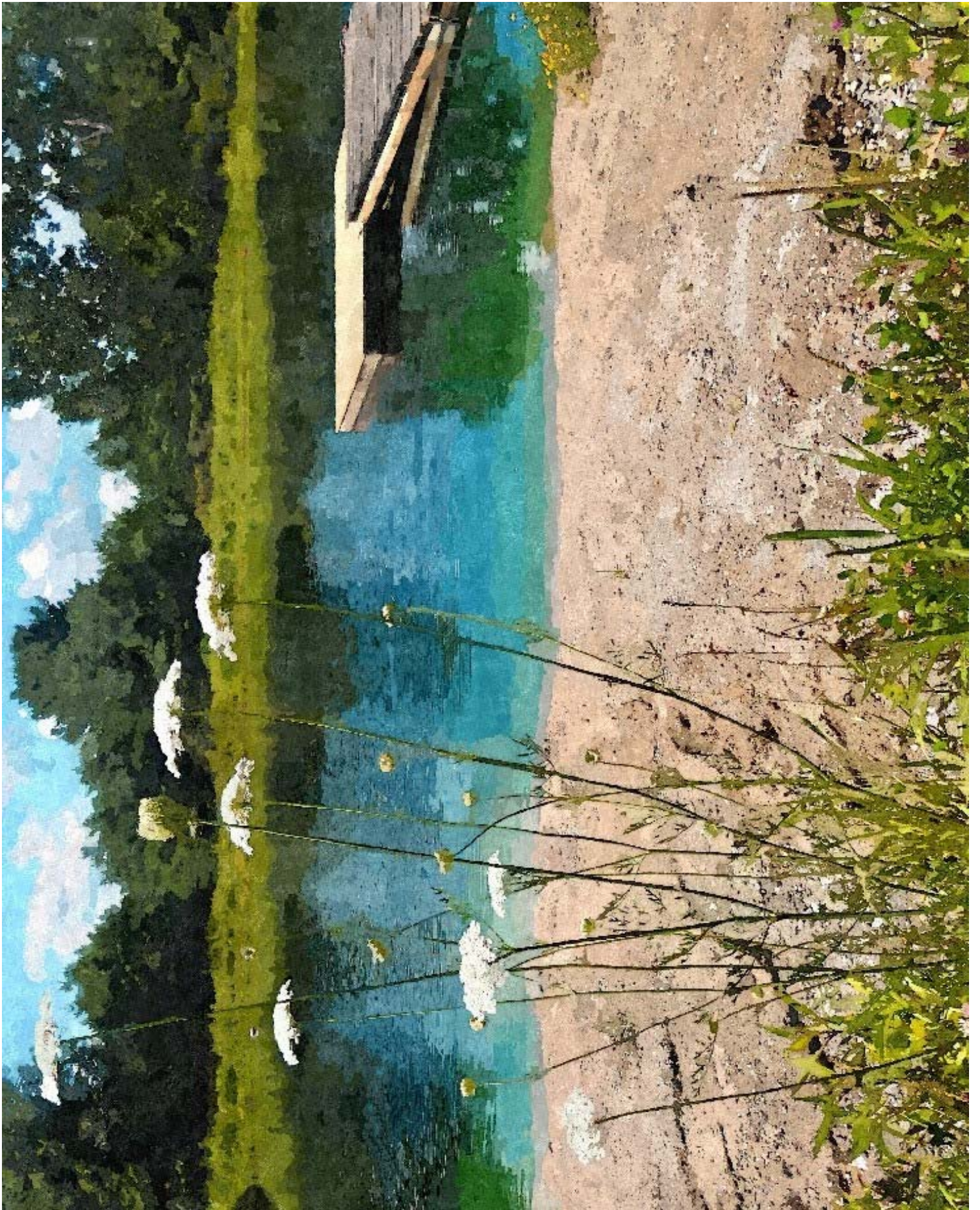
Please visit [TodaysArts.net](http://TodaysArts.net) to find more collections of my photos and photo paintings, fine quality, large size wall prints, canvases and posters, and directories of free how-to tutorials to help you create your own wall art photographs, paintings, drawings and watercolors.

Copyright 2015, Donald J. Berg

This collection and the individual images in it may be printed and used by purchasers for their personal use as decorations in private homes and offices. They may not be used for any commercial purpose without written permission. Resale of this collection or any of its images is prohibited. Copying, sharing, altering or distributing this collection or any of its images, in any way, is a violation of US and International copyright laws.



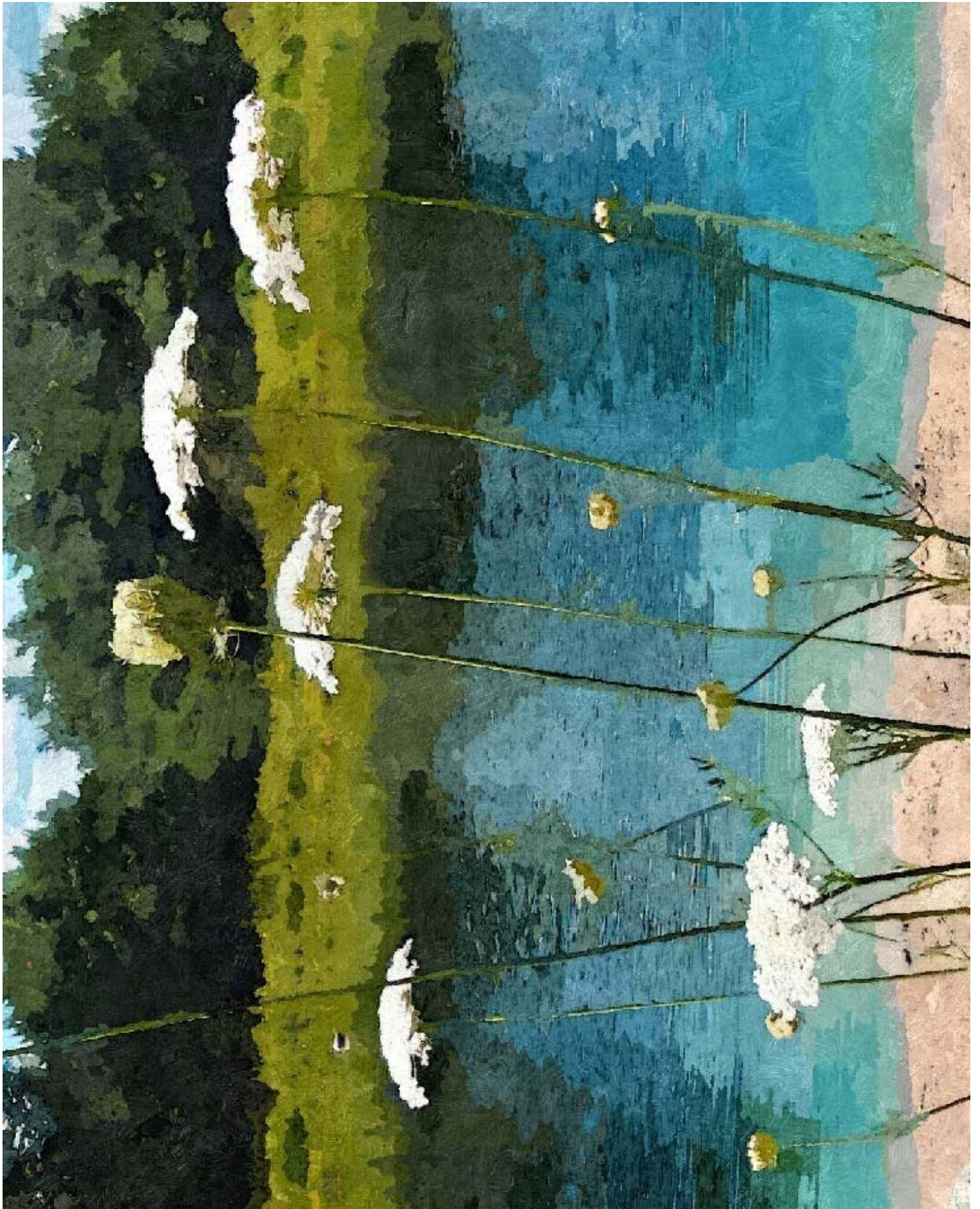
Beach Lace by Don Berg



Beach Lace by Don Berg



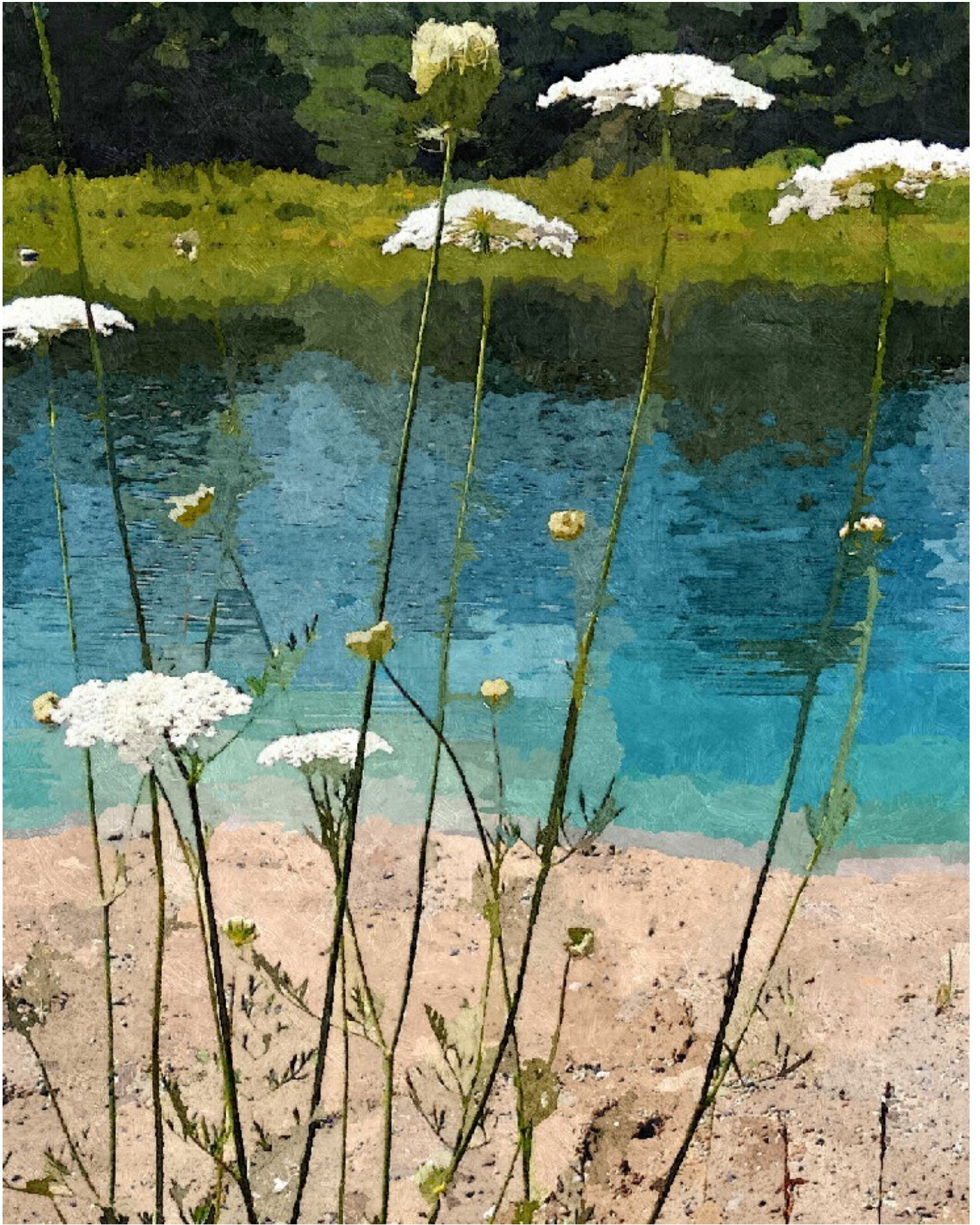
Beach Lace by Don Berg



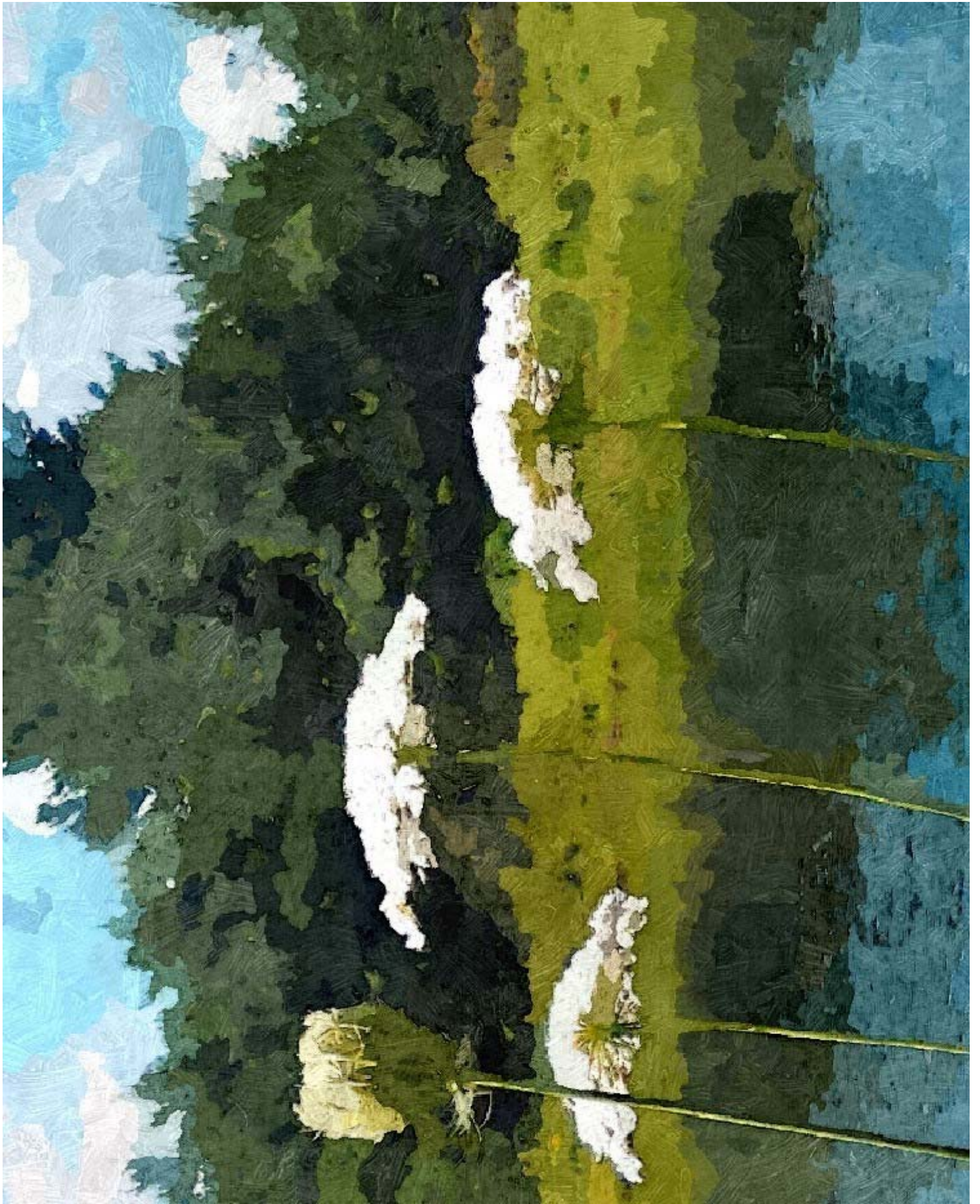
Beach Lace by Don Berg



Beach Lace by Don Berg



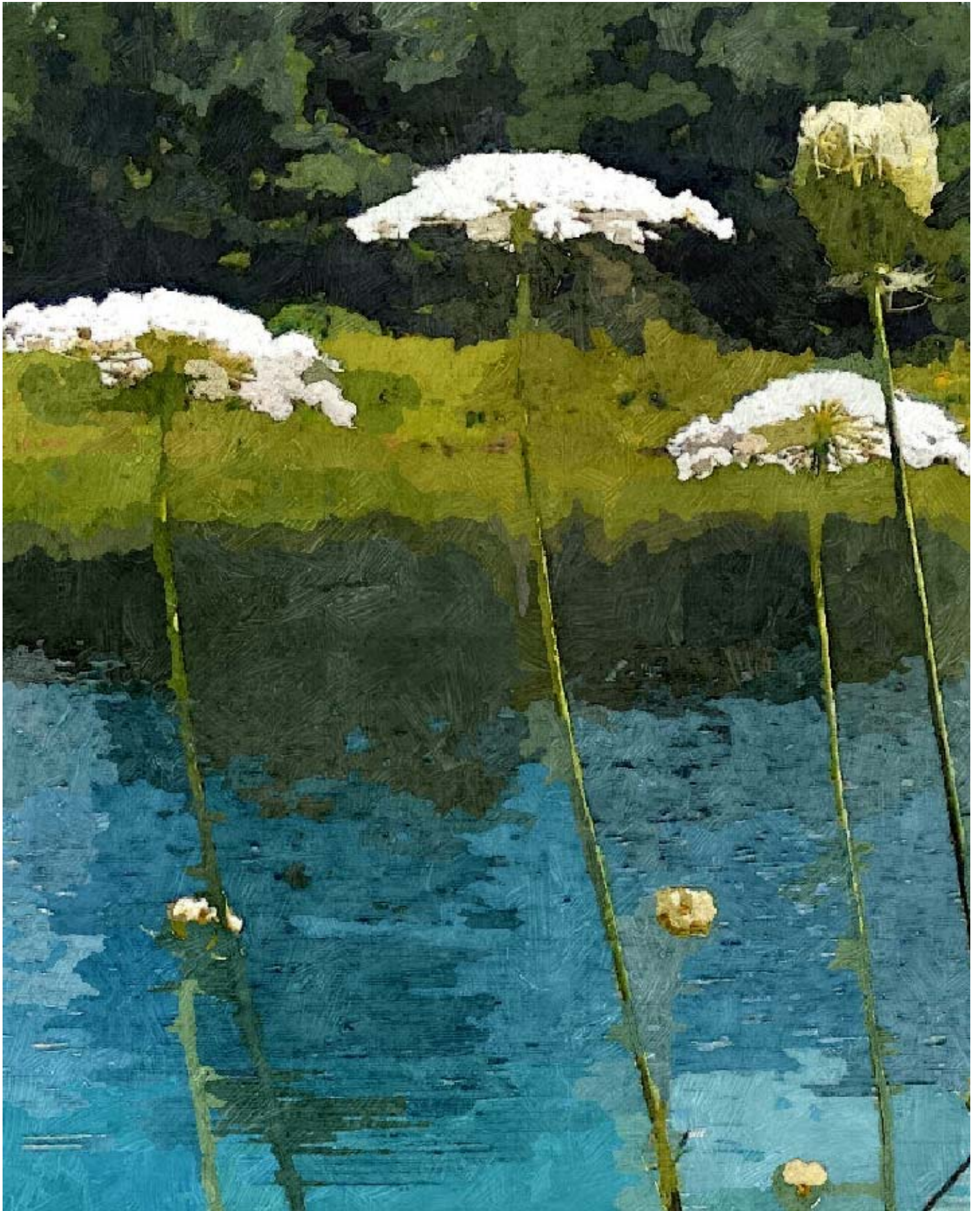
Beach Lace by Don Berg



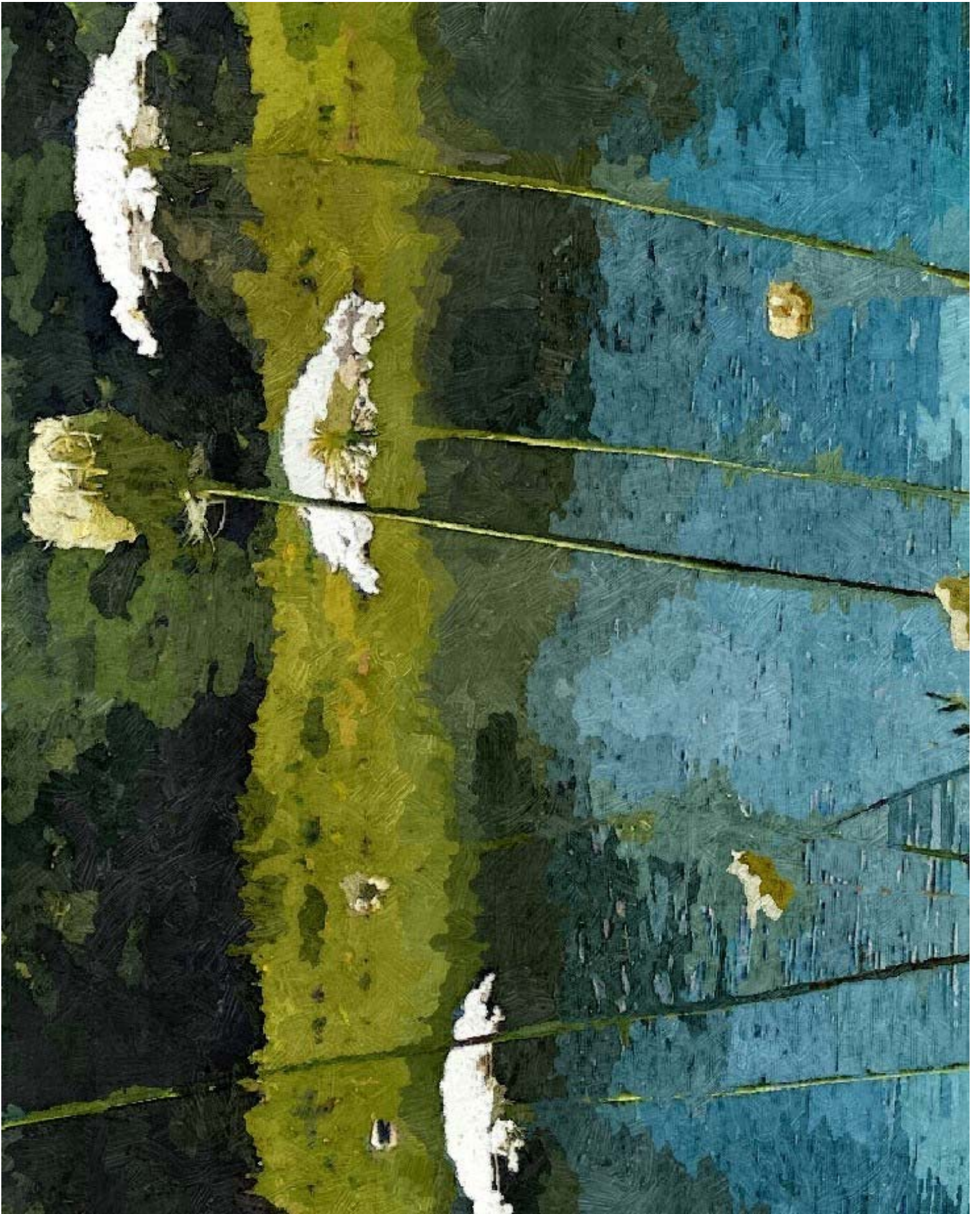
Beach Lace by Don Berg



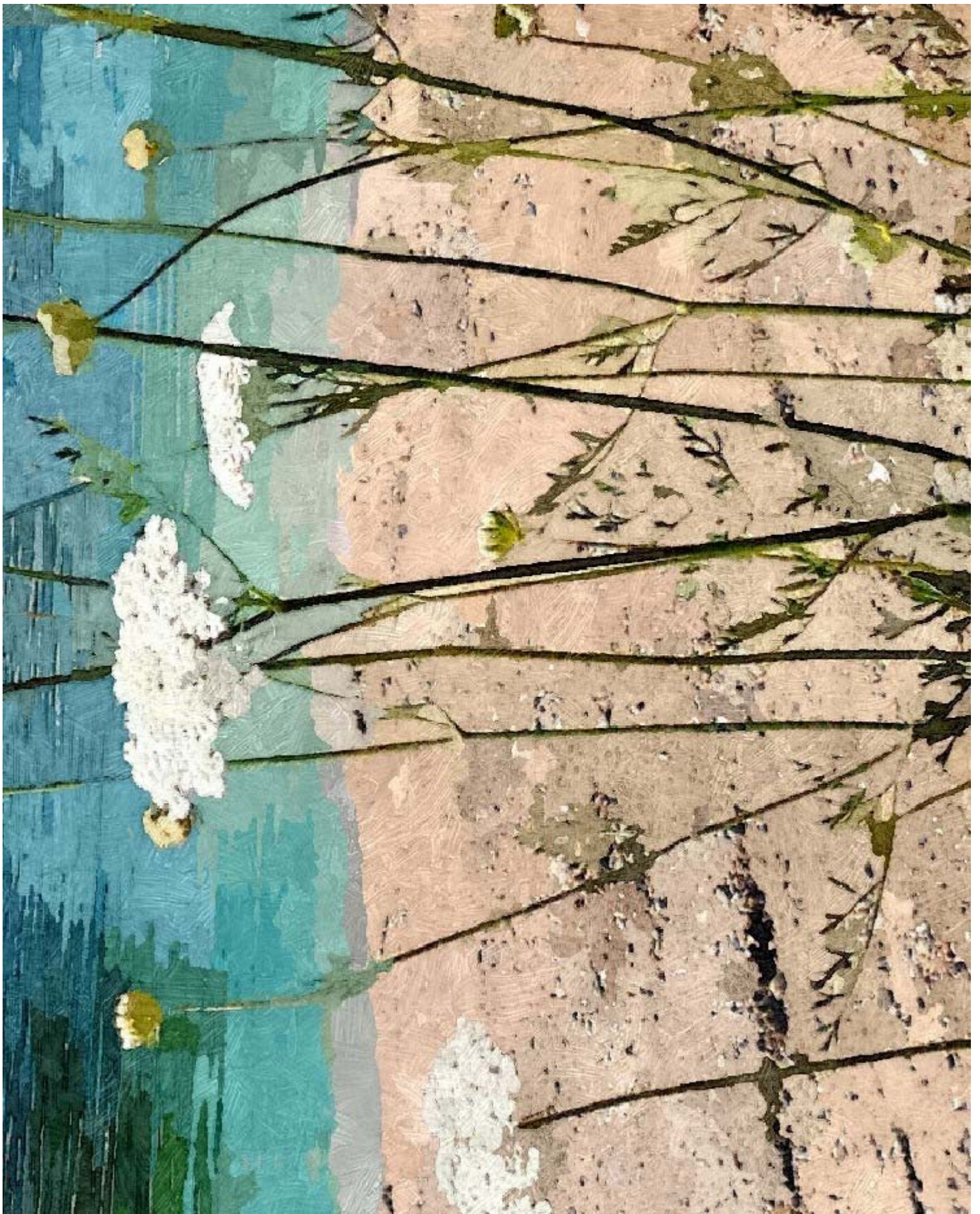
Beach Lace by Don Berg



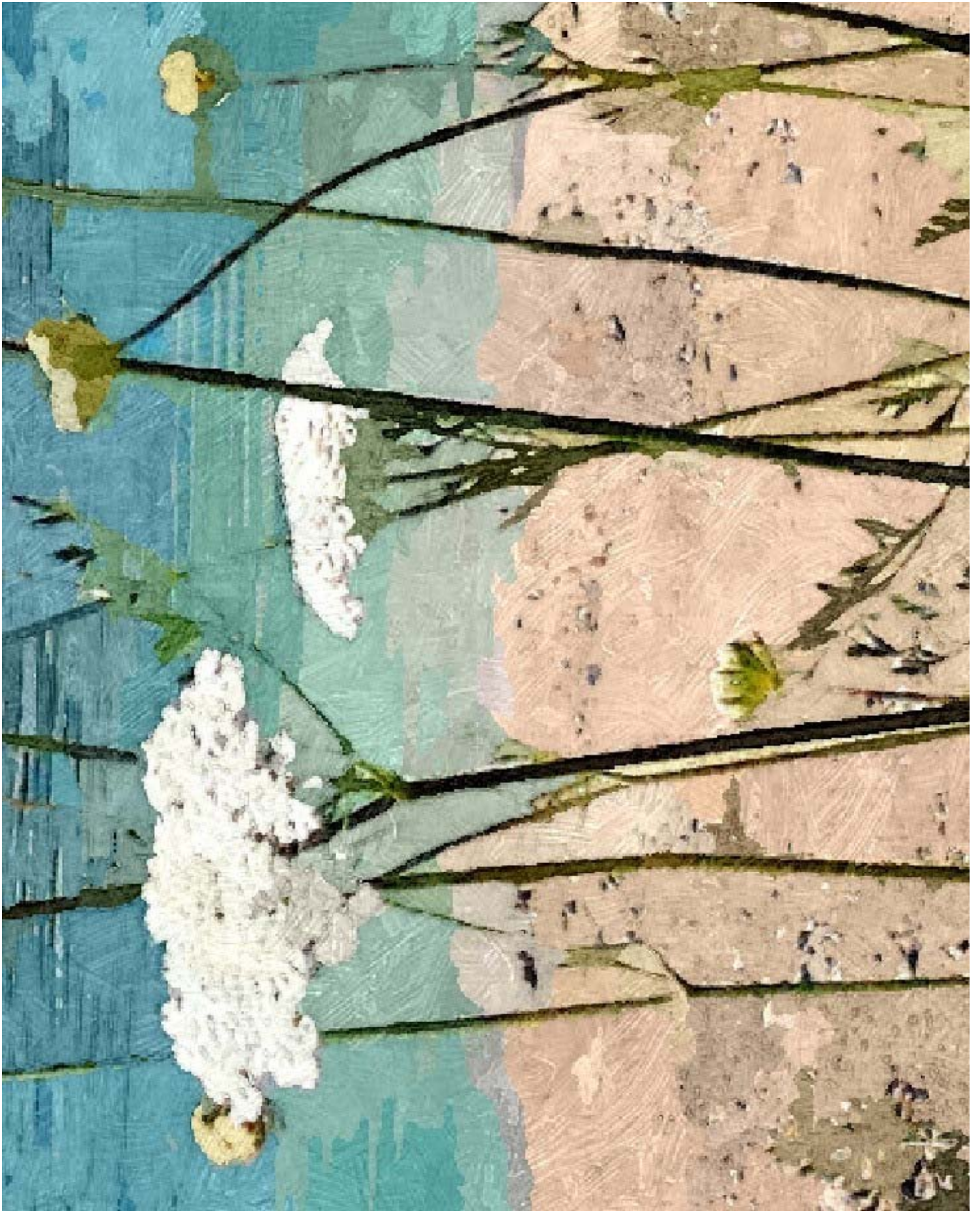
Beach Lace by Don Berg



Beach Lace by Don Berg



Beach Lace by Don Berg



Beach Lace by Don Berg



## Beach Lace Paint Colors by Sherwin Williams

<http://letschipit.com/Chip/bGBd3f?ow=1>

Click on the link above or copy the URL to your Internet browser to find other compatible paint colors with Sherwin Williams' Chip It! service. Use Chip It! to create your own custom combination of wall, room or craft project paint colors.



## Queen Anne's Lace Paint Colors by Sherwin Williams

<http://letschipit.com/Chip/Du6Fw3?ow=1>

Click on the link above or copy the URL to your Internet browser to find other compatible paint colors with Sherwin Williams' Chip It! service. Use Chip It! to create your own custom combination of wall, room or craft project paint colors.